

Bismuth Crystal

kit instructions

 **KITABLES**

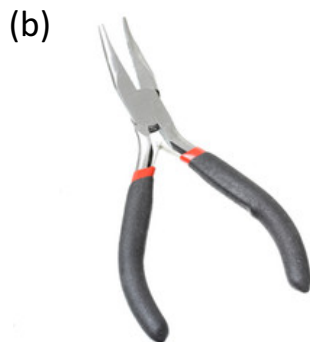
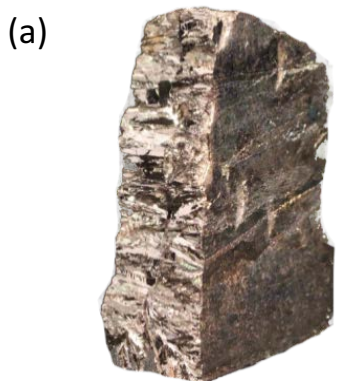


Bismuth Crystal Kit Instructions



Kit Includes:

- (a) 1lb Bismuth Ingot
- (b) Bent Nose Pliers
- (c) 1 Stainless Steel Crucible
- (d) Galvanized Wire Loop



Getting Started

- 1) Check your parts list.
- 2) Read through the instructions.
- 3) Gather your tools.
- 4) Ask your mom/spouse etc. if you can use the stove.
- 5) Heat up ingot in cup until molten.
- 6) Use pliers to pull out crystal and cool.
- 7) Display your crystal or try it again!

Tools Needed:



Hot Plate



Eye Protection

SAFETY FIRST! You will be working with molten metal, so we **HIGHLY** recommend the use of goggles and protective gloves.

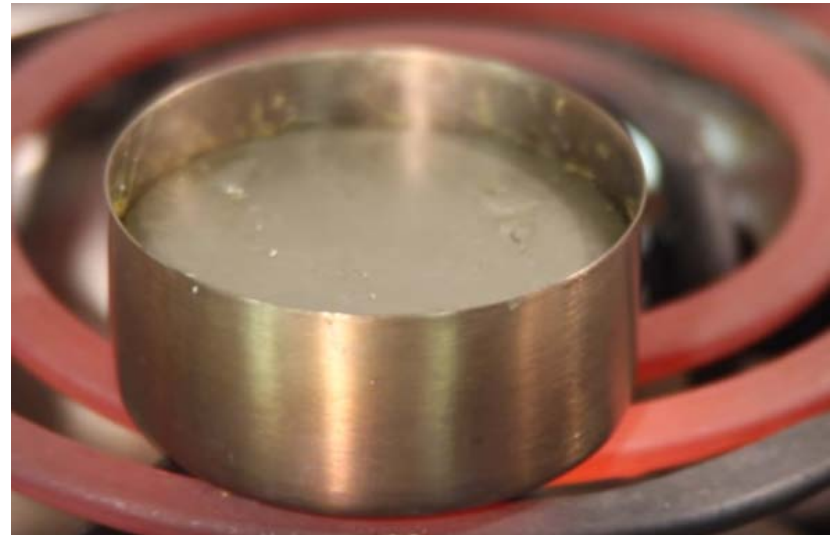
Bismuth Crystal Kit Instructions



Place raw Bismuth chunk into crucible and place that directly on to stove top. If you're worried about your stove range, you can place the crucible in a pan instead.



The bismuth ingot will become molten after about 10 - 20 minutes on the stove.



Bismuth Crystal Kit Instructions



Once molten, you'll see a film or layer form on the top. Using the wire loop, scrape or clear this layer.



Remove and place the bismuth film onto a non-flammable surface. Once you have fully removed this layer, you can turn off the heating element.

Bismuth Crystal Kit Instructions



As the metal cools in the cup, the crystal will start to harden inside. You can test this by tapping your loop or pliers in the middle to find the hardened area. Once it has hardened, use your pliers to gradually pull the crystal out of the center.



Grab the top of the crystal, lift it out quickly. It may resist or feel stuck. If you have an extra set of tongs, you can use those to hold crucible in place while you pull out crystal.

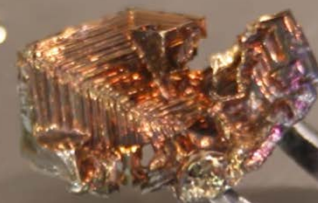
Bismuth Crystal Kit Instructions



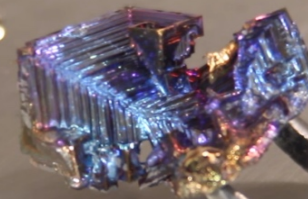
Remove the crystal from crucible and leave on pliers while they both cool. Notice, we flipped the crystal up so the pliers can rest on a surface until the crystal has cooled completely.



00



59



Cooling can take from 1- 5min depending on crystal size. Notice the color changes as the crystal cools.

Bismuth Crystal Kit Instructions



After it has cooled, you can remove your crystal from the pliers. If you're not happy with your crystal, you can reheat and start the process again!

The crystal in this kit will be approximately an inch square. You can make larger crystals with more bismuth product and accommodating heating elements.

You have now completed a Kitables Kit! If you have questions, check out our FAQ at [Kitables.co](https://www.kitables.co) or email us at info@kitables.co

